

OFFICE SPACE FOR LEASE

6611 E. Central

For more
information
or to
schedule
a showing
please contact
Tony or Tim.



ADDRESS

6611 E. Central
(Near Central & Woodlawn)

SIZE

Ste. F - 1,300 sq. ft. (available 1/1/26)

RENT

\$1,300.00 mo. (\$12.00 psf)
plus utilities and janitorial

PARKING

Free for tenants and visitors

COMMENTS

- Great visibility and accessibility
- Negotiable remodel allowance
- Furniture included
- Exterior street signage on Central Ave.
- Abundant door side parking
- Located near many restaurants, retail
- Suitable for office, retail, medical
- Other tenants include:
 - Doctors' Offices
 - Accountants
 - Counselors
 - Massage Therapists

Updated 10/8/25

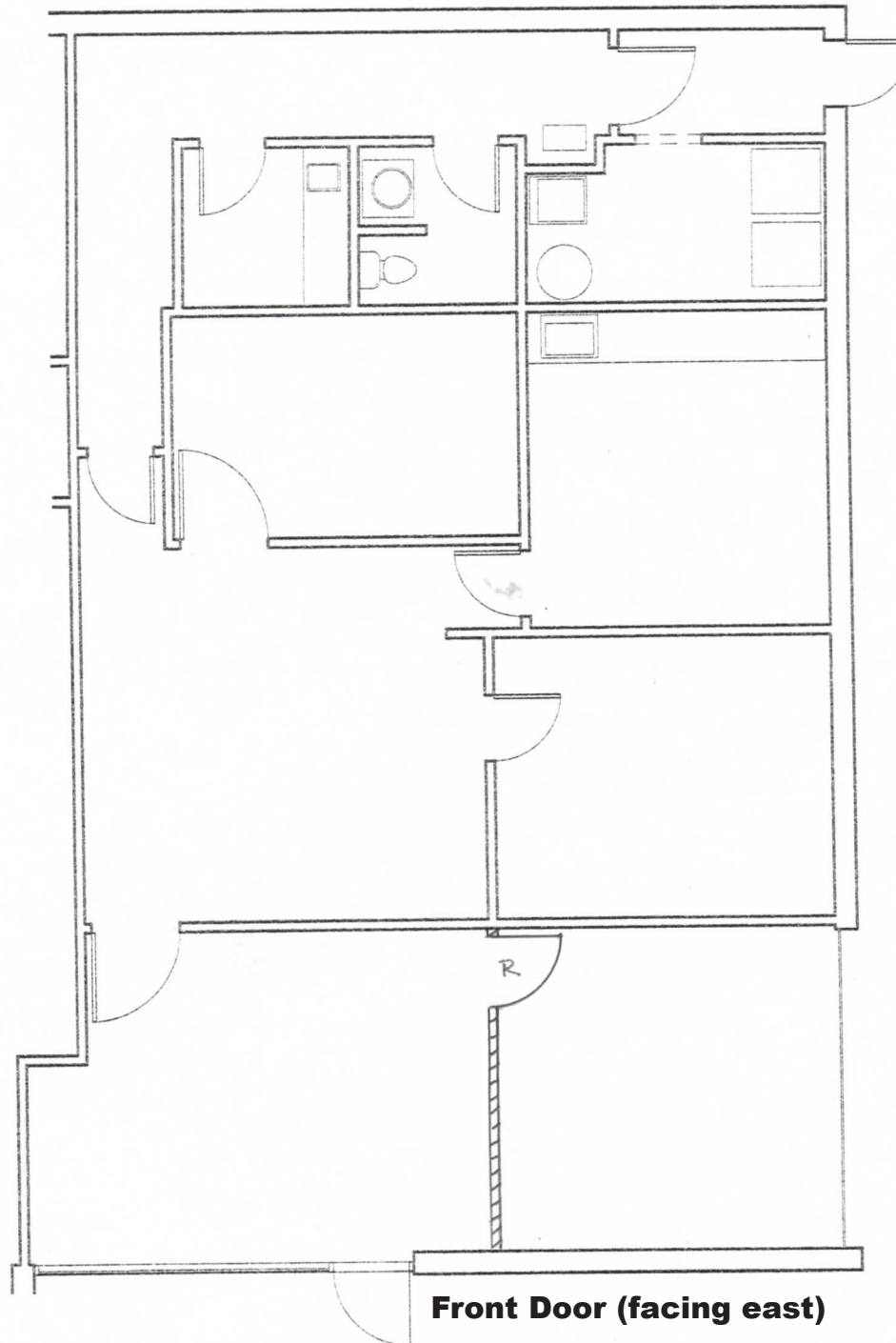


Tony Utter: 316-990-8710 (mobile) / 316-263-2448 (office)
CCIM, JD tony@utterproperties.com

Tim Utter: 316-871-1628 (mobile) / 316-263-2448 (office)
tim@utterproperties.com

6611 E. Central / Ste. F

*For more
information
or to
schedule
a showing
please contact
Tony or Tim.*



Tony Utter: 316-990-8710 (mobile) / 316-263-2448 (office)
CCIM, JD tony@utterproperties.com

Tim Utter: 316-871-1628 (mobile) / 316-263-2448 (office)
tim@utterproperties.com

6611 E. Central / Ste. F Photos

*For more
information
or to
schedule
a showing
please contact
Tony or Tim.*



Tony Utter: 316-990-8710 (mobile) / 316-263-2448 (office)
CCIM, JD tony@utterproperties.com

Tim Utter: 316-871-1628 (mobile) / 316-263-2448 (office)
tim@utterproperties.com

The information contained herein was obtained from sources believed reliable, however, Utter Commercial Real Estate, Inc. makes no guarantees, warranties or representations as to the completeness or accuracy thereof. The presentation of this property is submitted subject to errors, omissions, change of price or conditions prior to lease, or withdrawal without notice.