

# OFFICE SPACE FOR LEASE

## River Park Place



### **ADDRESS**

727 N. Waco (Murdock & Waco)

### **LEASE RATE**

\$16.00-\$16.50 psf, full-service

### **SUITE    SIZE (sq. ft.)**

200\*    1,952 (partial views of the river)

220\*    1,732

290    1,691

\*combine 200 & 220 for 3,684 sq. ft.

### **HIGHLIGHTS**

- Downtown address, easy accessibility
- Abundant free parking
- Street signage
- Building break room
- Building conference room
- Fiber optic and cable ready
- Professionally managed by UCPM

Stephanie Wise

Updated 3/15/21



**Tony Utter, CCIM, JD**

tony@utterproperties.com  
www.utterproperties.com  
316.263.2448 office  
316.990.8710 cell

**Tim Utter**

tim@utterproperties.com  
www.utterproperties.com  
316.263.2448 office  
316.871.1628 cell

**Stephanie Wise**

stephanie@johnarnold.com  
316.263.7242 office  
316.461.9206 cell  
316.263.9994 fax

# River Park Place / Aerial

For more  
information  
or to  
schedule  
a showing  
please contact  
Tony Utter  
Tim Utter  
or  
Stephanie Wise



**Tony Utter, CCIM, JD**

tony@utterproperties.com  
www.utterproperties.com  
316.263.2448 office  
316.990.8710 cell

**Tim Utter**

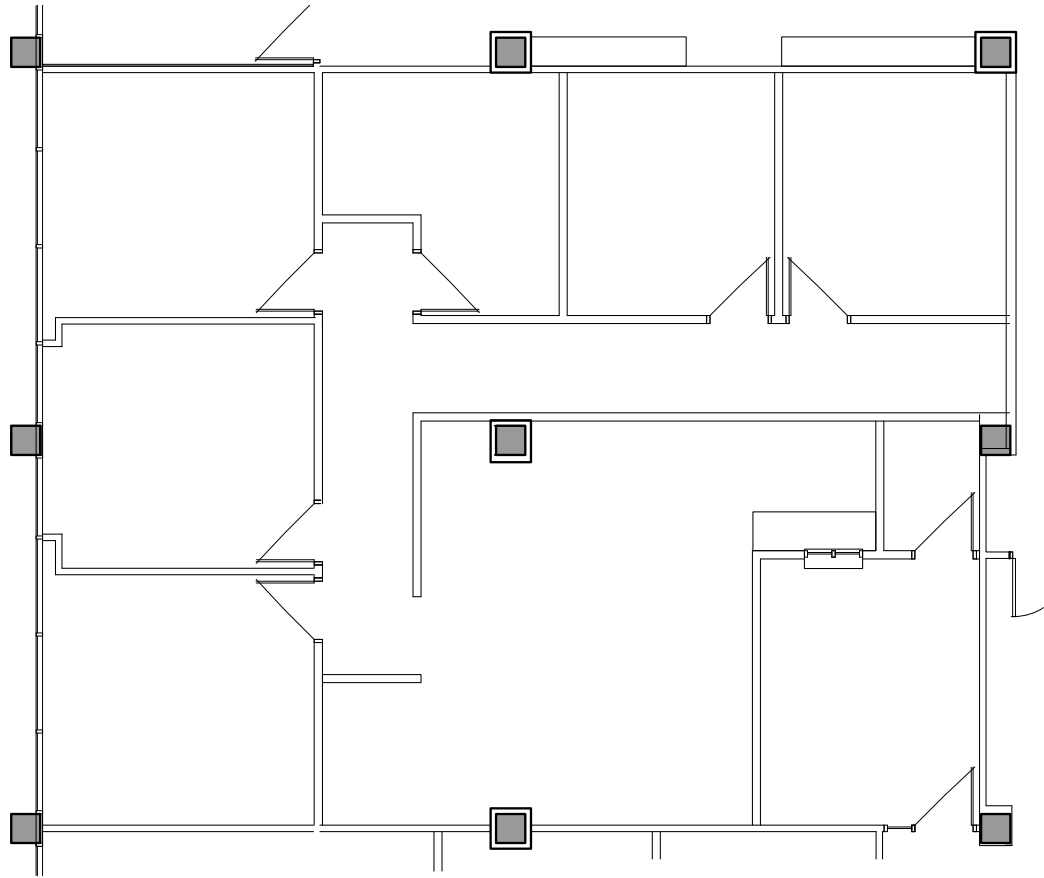
tim@utterproperties.com  
www.utterproperties.com  
316.263.2448 office  
316.871.1628 cell

**Stephanie Wise**

stephanie@johntarnold.com  
316.263.7242 office  
316.461.9206 cell  
316.263.9994 fax

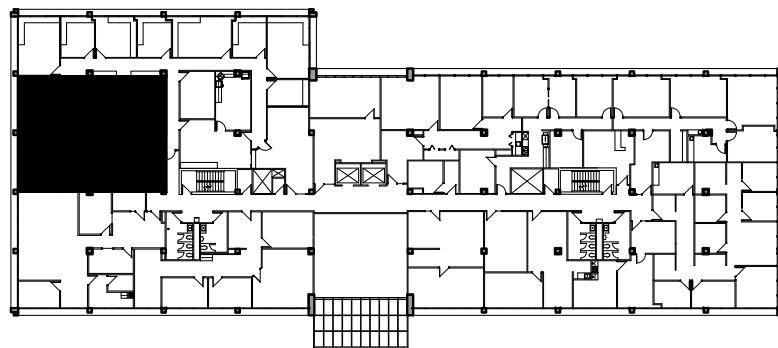
# River Park Place / Ste. 200

For more  
information  
or to  
schedule  
a showing  
please contact  
Tony Utter  
Tim Utter  
or  
Stephanie Wise



**(B) 2ND FLOOR- SUITE 200- EXISTING FLOOR PLAN**  
1,952 SF TOTAL

1/8"=1'-0"  
0 8'



**(A) KEYPLAN- SECOND FLOOR**

**Tony Utter, CCIM, JD**

tony@utterproperties.com  
www.utterproperties.com  
316.263.2448 office  
316.990.8710 cell

**Tim Utter**

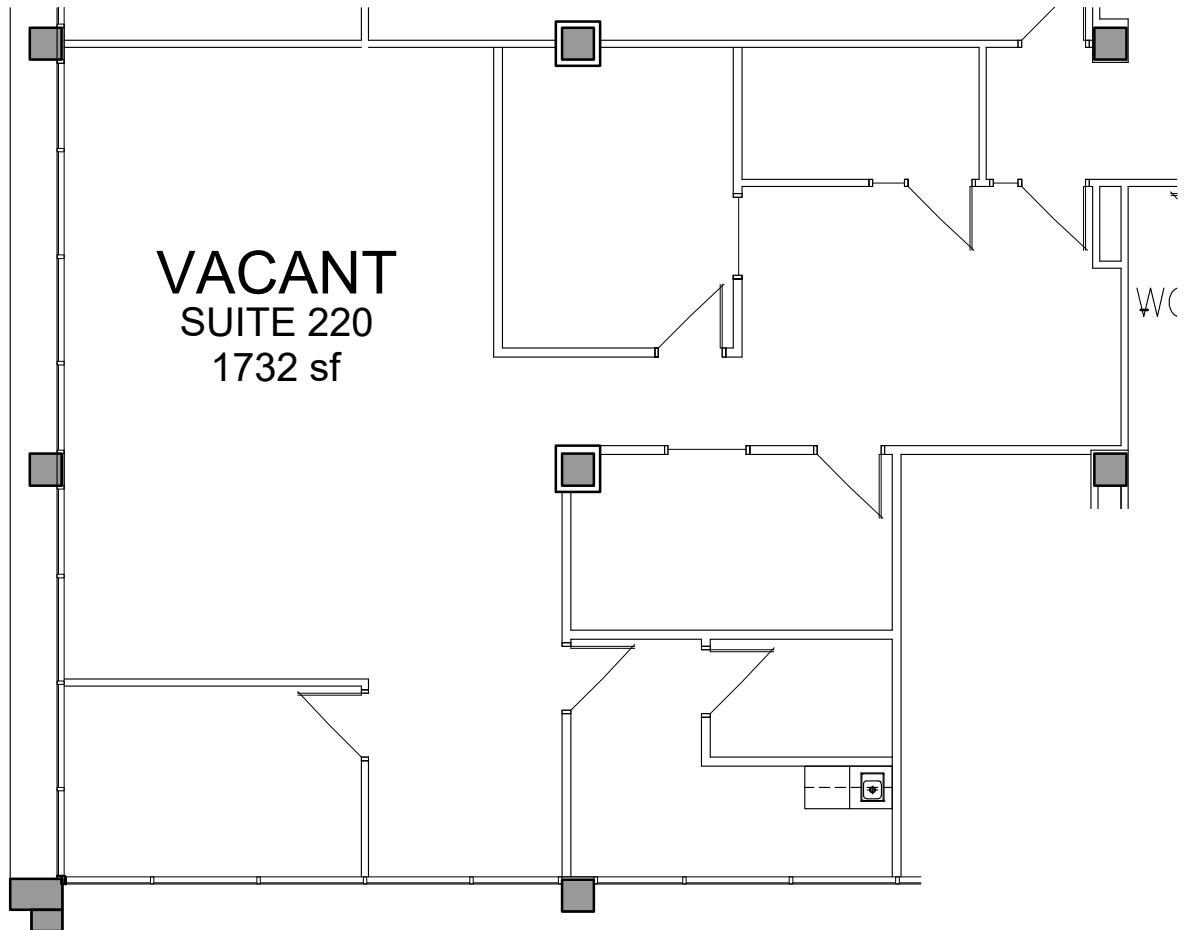
tim@utterproperties.com  
www.utterproperties.com  
316.263.2448 office  
316.871.1628 cell

**Stephanie Wise**

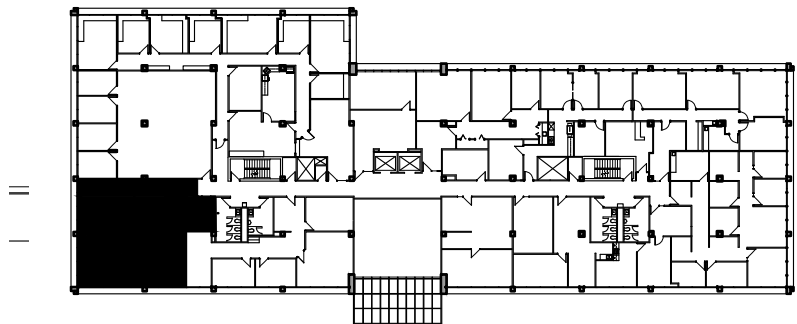
stephanie@johntarnold.com  
316.263.7242 office  
316.461.9206 cell  
316.263.9994 fax

# River Park Place / Ste. 220

For more  
information  
or to  
schedule  
a showing  
please contact  
Tony Utter  
Tim Utter  
or  
Stephanie Wise



 **A FLOOR PLAN- SUITE 220**  
1/4"=1'-0"  
0 4'



 **B KEYPLAN- SECOND FLOOR**

**Tony Utter, CCIM, JD**

tony@utterproperties.com  
www.utterproperties.com  
316.263.2448 office  
316.990.8710 cell

**Tim Utter**

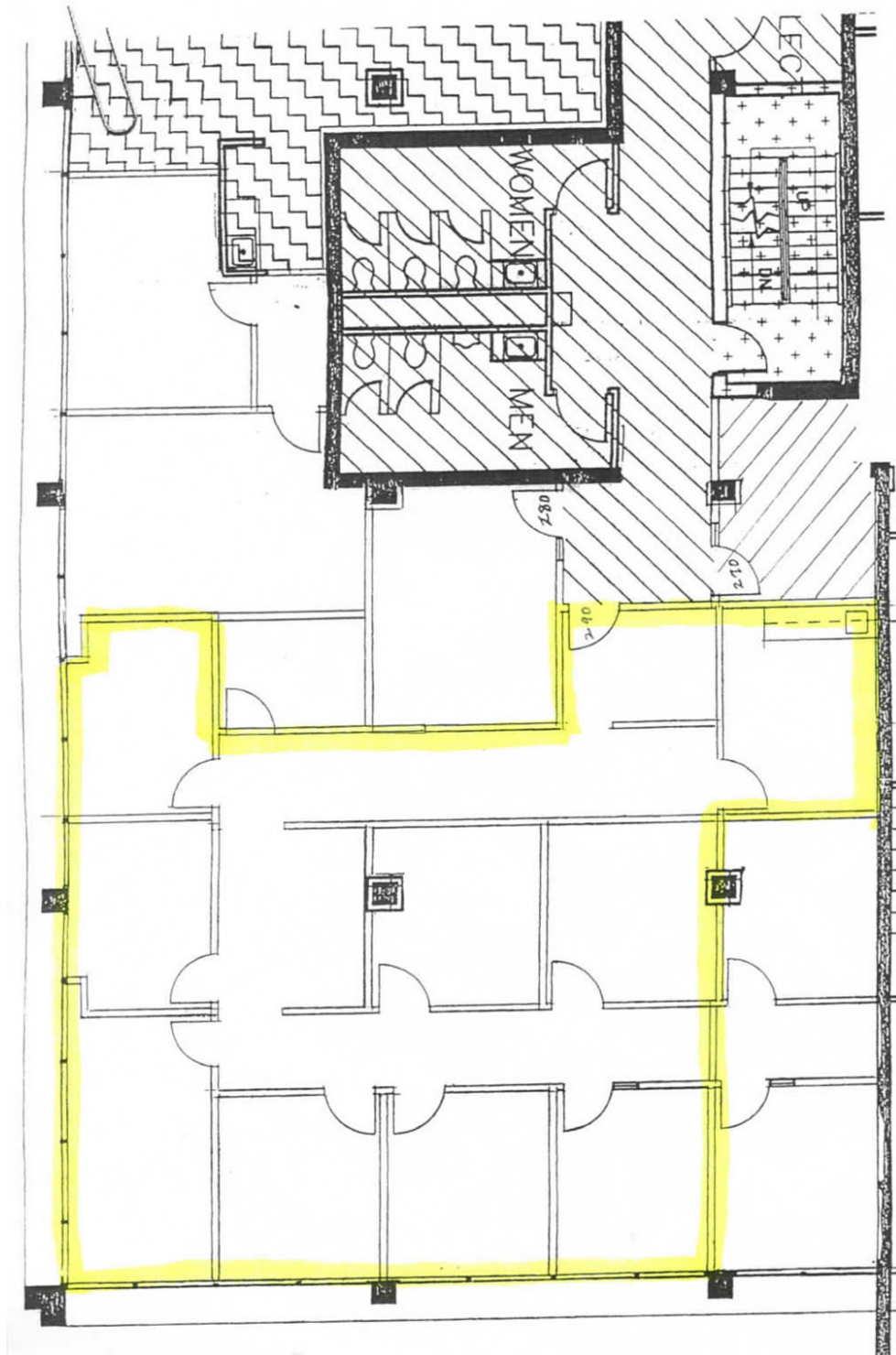
tim@utterproperties.com  
www.utterproperties.com  
316.263.2448 office  
316.871.1628 cell

**Stephanie Wise**

stephanie@johntarnold.com  
316.263.7242 office  
316.461.9206 cell  
316.263.9994 fax

# River Park Place / Ste. 290

*For more  
information  
or to  
schedule  
a showing  
please contact  
Tony Utter  
Tim Utter  
or  
Stephanie Wise*



**Tony Utter, CCIM, JD**

tony@utterproperties.com  
www.utterproperties.com  
316.263.2448 office  
316.990.8710 cell

**Tim Utter**

tim@utterproperties.com  
www.utterproperties.com  
316.263.2448 office  
316.871.1628 cell

**Stephanie Wise**

stephanie@johntarnold.com  
316.263.7242 office  
316.461.9206 cell  
316.263.9994 fax