

LOT FOR SALE - EXCLUSIVE WATERFRONT DEVELOPMENT

The Executive Offices at Waterfront



For more
information
or to
schedule
a showing
please contact
Calvin or Tim.

LOCATION

Near NE Corner of 13th & Webb Rd.
Wichita, Kansas

PARCEL

Tract J

SITE SIZE

14,575 sq. ft.

UTILITIES

At or near the site.

REAL ESTATE TAXES

\$2,290.46 (2025)

SALE PRICE

\$295,000.00

LEGAL DESCRIPTION

A portion (Tract J) of Lot 1, Block 1,
Waterfront Fourth Addition to Wichita,
Sedgwick County, Kansas.

COMMENTS

- This is the only undeveloped lot for sale in The Executive Offices at Waterfront, which is a Class AA office development.
- Located by many other office and retail uses.

2/2026

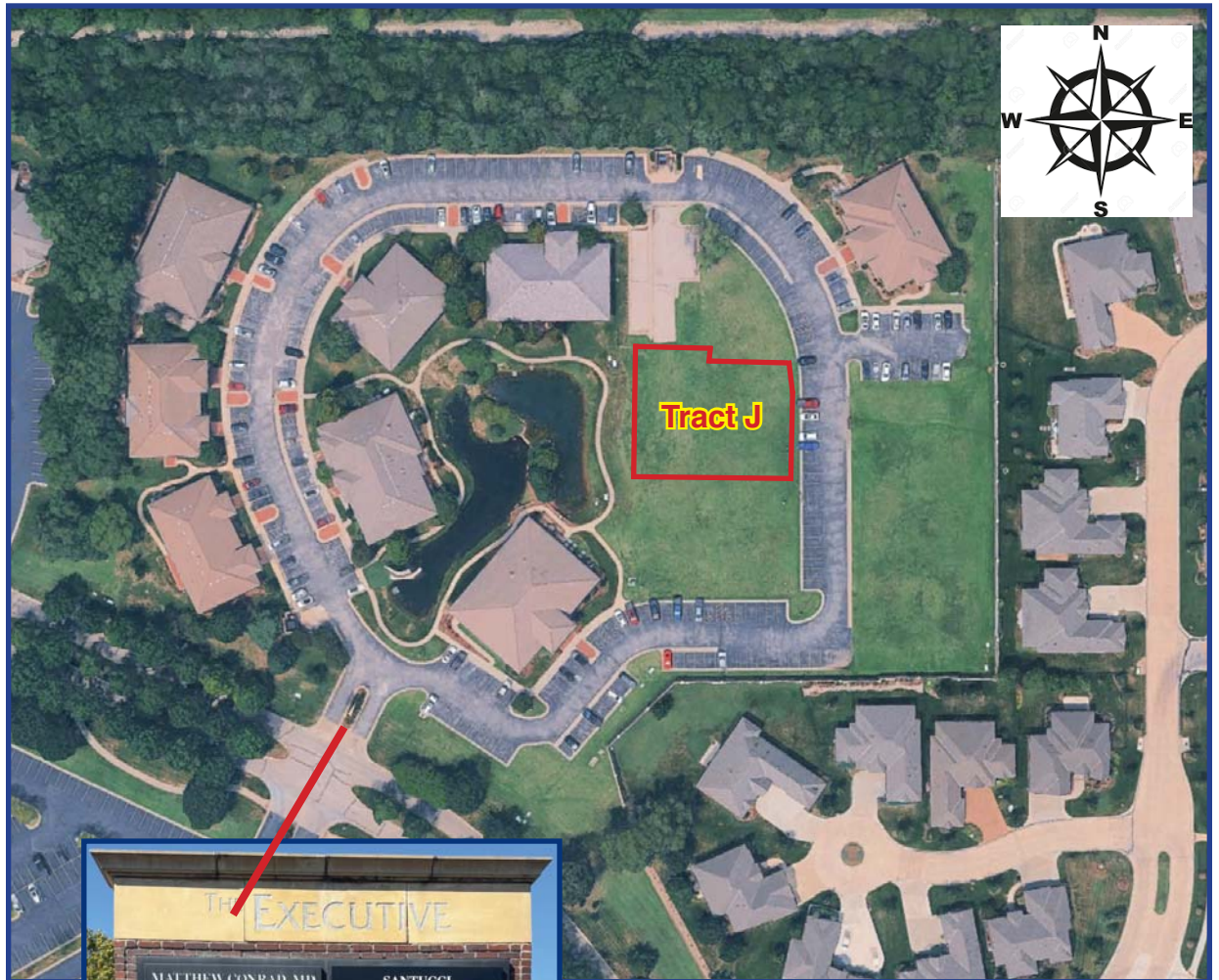


Calvin: 316-641-5174 (mobile)
calvink@weigand.com

Tim Utter: 316-871-1628 (mobile) / 316-263-2448 (office)
tim@utterproperties.com

TRACT J / AERIAL

*For more
information
or to
schedule
a showing
please contact
Calvin or Tim.*



Calvin: 316-641-5174 (mobile)
calvink@weigand.com

Tim Utter: 316-871-1628 (mobile) / 316-263-2448 (office)
tim@utterproperties.com

TRACT J / PHOTOS

*For more
information
or to
schedule
a showing
please contact
Calvin or Tim.*

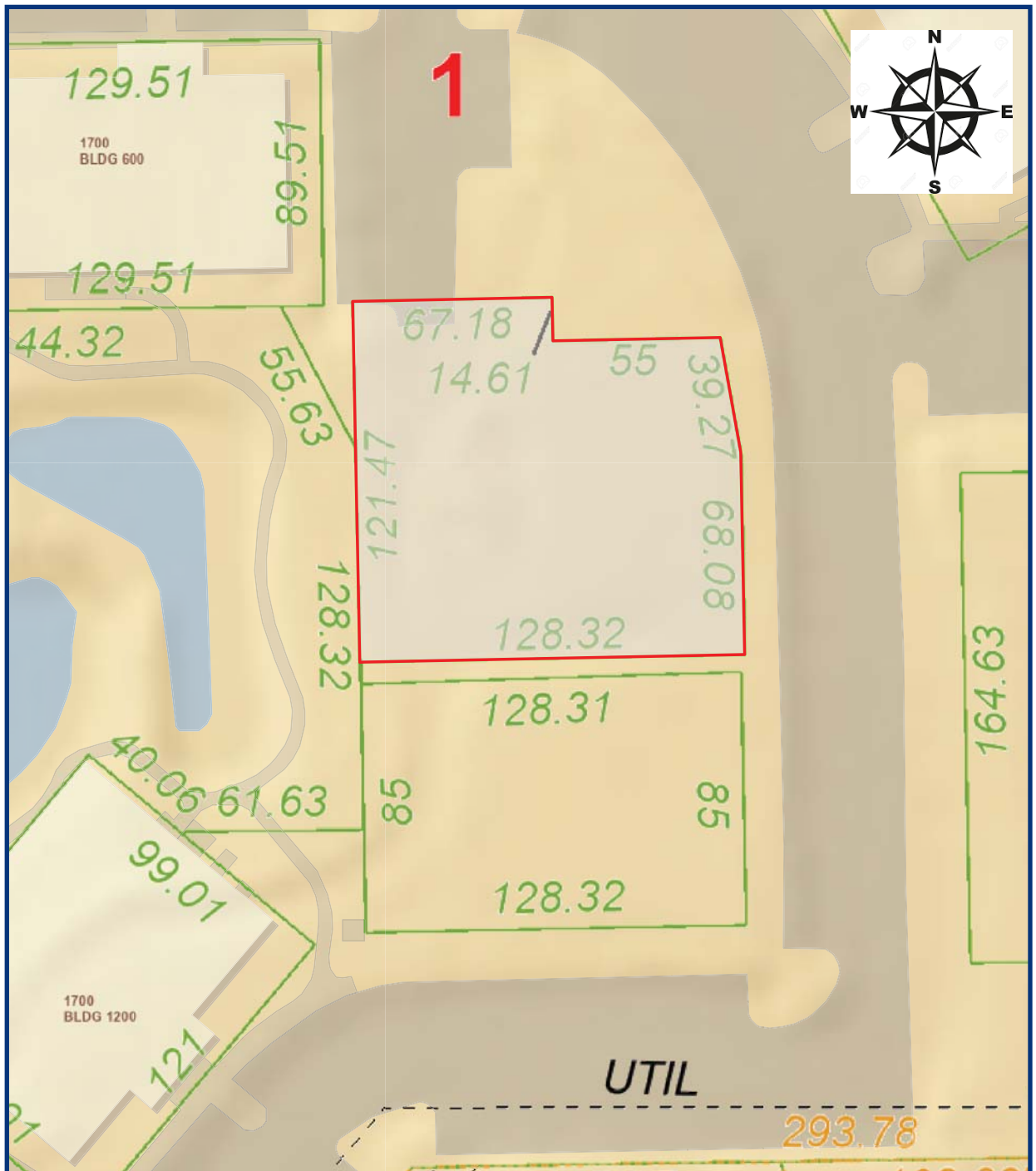


Calvin: 316-641-5174 (mobile)
calvink@weigand.com

Tim Utter: 316-871-1628 (mobile) / 316-263-2448 (office)
tim@utterproperties.com

TRACT J / SITE PLAN

For more
information
or to
schedule
a showing
please contact
Calvin or Tim.



Calvin: 316-641-5174 (mobile)
calvink@weigand.com

Tim Utter: 316-871-1628 (mobile) / 316-263-2448 (office)
tim@utterproperties.com